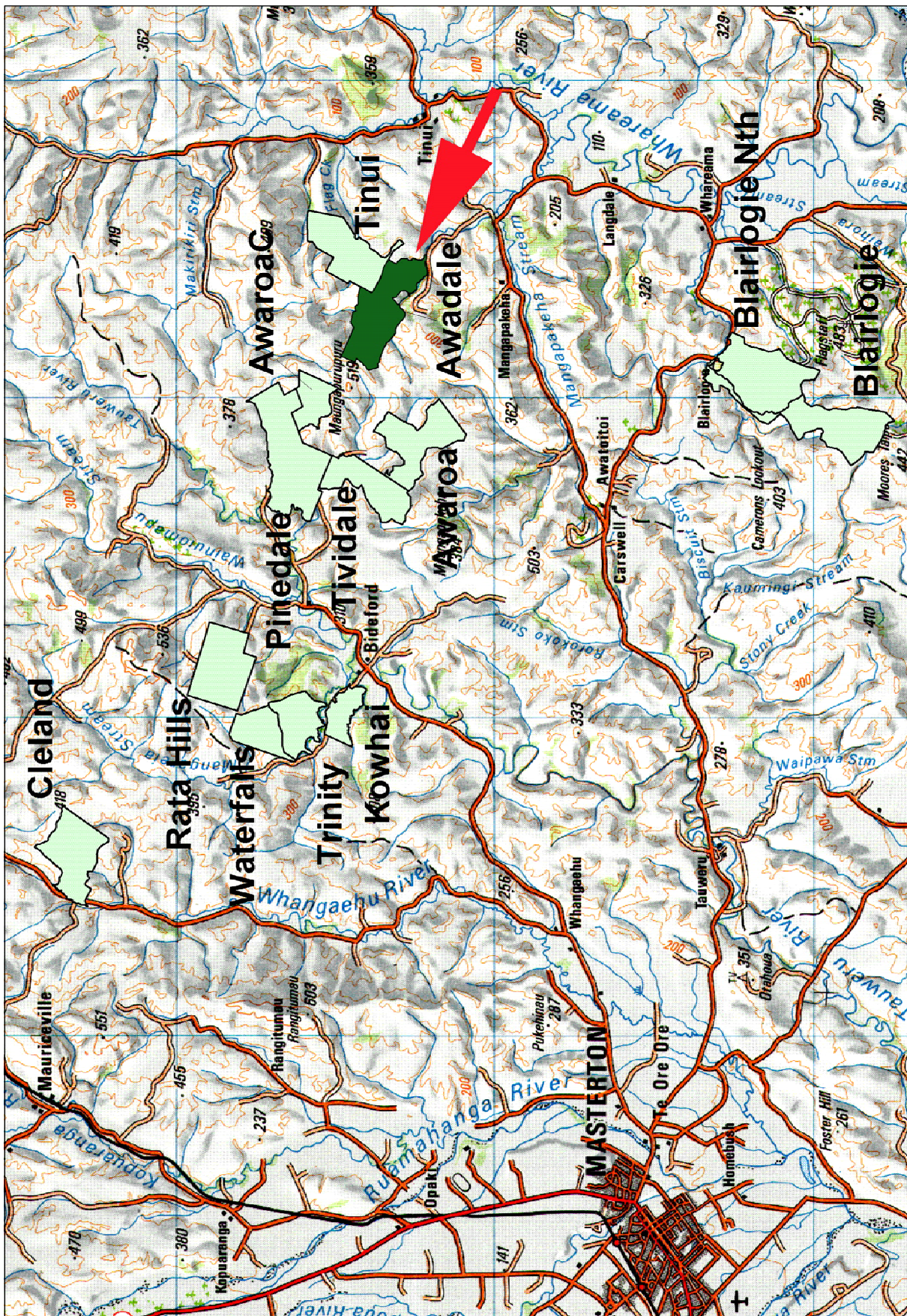


# Awadale Forest Investment



Awadale Forest is located approximately 38km east of Masterton. Access from Masterton is 3km off the Masterton to Castlepoint Road at the end of Bute Road.



5 Papawai Place, Masterton 5810 | PO Box 128, Masterton 5840, New Zealand  
Office +64 6 370 6360 | Fax +64 6 370 6369 | [www.forestenterprises.co.nz](http://www.forestenterprises.co.nz)

Forest Enterprises is the business name of Forest Enterprises Growth Limited and its subsidiary Forest Enterprises Limited. Forest Enterprises Limited is licenced to manage Managed Investment Schemes (excluding managed funds) which are primarily invested in forestry assets.